



# European Society of Biomechanics Newsletter

## Spring 2009

Editor: Dr Gwendolen Reilly. Editorial Office: Kroto Research Institute, Department of Engineering Materials, University of Sheffield, Broad Lane, Sheffield S3 7HQ, UK. E-mail: [publication.chair@esbiomech.org](mailto:publication.chair@esbiomech.org) Website: [www.esbiomech.org](http://www.esbiomech.org)

### MESSAGE FROM THE PRESIDENT, Ralph Müller

#### Contents

ESB President's message	1
Darwin's anniversary	2
Update on student activities	3
ESB 2010	4
Meeting announcements	6
Society News	7

Dear Members,

In my last message, I was talking about growth and how I thought that continued growth in our number of members would be important for our Society. I also mentioned that it is important that we as a council know our members and what services they would like from our Society. Last week, we have therefore asked you to update your online profile data with some demographic information that we have recently added to the member profiles. There, you can provide information on your education, your work place, and your areas of expertise.

I hope that all of you followed the invitation and already updated the information. If you have not yet done so, please go to the ESB web page and do it now. With this information it will be easier for us to better know our members and from that to devise a strategy on how to best serve our members.

In that message, I have also asked you to provide feedback to my suggestion that we should grow further - I indicated a number of 1000 members - but as of today I have not received any feedback. Of course, now I wonder whether this is actually because you agree, do not dare to voice your opinion, or maybe are simply too busy to answer.

In these situations, I try to find advice from people that are wiser than me, which led me to a quote from Lao-Tzu, the father of Taoism, who once wrote "As for the best leaders, the people do not notice their existence. The next best, the people honor and praise. The next, the people fear, and the next the people hate. When the best leader's work is done, the people say, 'we did it ourselves!'" I guess everybody would agree that as a president of a society you would not like to be in the two last categories. I think that although it might actually be very nice if people honor and praise their leader, it would really be the biggest accomplishment to succeed in what Lao-Tzu described to be the best leader. Therefore, leaders of a society should always strive to inform the members about their plans and continue to work on the implementation together with their constituency. In the end, this process should lead to a sense of ownership with the members so that they can eventually stand behind the decisions and hopefully become leaders themselves, since as already Ralph Nader said "I start with the premise that the function of leadership is to produce more leaders, not more followers."

As we continue to grow as a Society we will also have to grow the number of members who are willing to lead and work for our members. This will be mostly done by enlarging the different standing committees of our Society such as the education, meeting, member and publication committee. One good example where the committee is already now going beyond the border of the Council is the student committee, where students, postdocs and councilors are working together to create more interaction and services for our youngest members. See more information on the student committee and its members later on in this newsletter. Let us know if you are interested in serving in one of the committees.

## On the celebration of Wallace's theory of evolution and Roux's adaptation process, Damien Lacroix, ESB Secretary-General

This year marks the 200th anniversary of the birth of Charles Darwin which is celebrated worldwide and with great effusion in the media. As a scientific society we can only be delighted to have such scientific 'star' whose outstanding scientific contribution can reach out so far to the public. Such figure in biomechanics is still to be desired.

Although quite obvious now, Darwin collected, during many years, evidence that shows how species evolve over time through a natural process. Based on environmental conditions, species can disappear, evolve, or be created in a process in which each new generation is better adapted to the actual environment. We now know that this selection process occurs through small changes in the genetic material of a population of organisms from one generation to another. Though the changes produced in any one generation are small, differences accumulate with each generation and can, over time, cause substantial changes in organisms. This process can culminate in the emergence of new species. The natural selection process is therefore based on genetic processes that occur on a very large scale difficult to appreciate on the human time scale. This time scale is probably one of the main reasons for its only relatively recent discovery and its difficulty in being accepted for many decades. However, epigenetic factors are significant contributors to the determination of which 'changes' will be favoured over another. Therefore, biomechanics has a role within Darwin's theory as it is possible to identify how biomechanics has contributed to the development of one species over another. A classical example is the ability to go from quadruped to biped locomotion but other examples include the development of fingers and toes, the position of the heart on the left rather than on the right, the adapted size of animals etc... Many examples of biomechanics origins or implications can be found in the most famous book of Darwin, '*On the Origin of Species*', published in 1859 and meant to be an abstract of his 'big book' on *Natural Selection*.

However, the most important landmark set by Darwin was his manuscript read at the extra meeting of the Linnean Society on 1 July 1858. What has tended to be forgotten (at least in the general public) is the contribution of Alfred Russel Wallace to the theory of evolution by natural selection. Indeed the manuscript read at the Linnean Society in 1858 was in fact a joint announcement of the theory of evolution by natural selection with the reading of two papers from each scientist: *On the Tendency of Species to form Varieties* (from Wallace); and *On the Perpetuation of Varieties and Species by Natural Means of Selection* (from Darwin). Wallace had also gathered evidence during many years that better-adapted groups would gradually replace less well-adapted ones. He had formulated in written such concept without knowing Darwin's work. This exemplifies what scientists have always known, that the making of a new theory rarely

occurs in isolation. In fact, other scientists were working in the same direction. However, differences in social status, personality and character caused most of the credit of the theory of evolution by natural selection to be retained mainly by Darwin. But, it should be remembered that Darwin and Wallace formulated independently that life consists of a diversifying genealogical process and that species evolve naturally from less-adapted groups to more-adapted groups.

Wilhelm Roux 1850-1924

A similar parallel can be made in biomechanics with 'our' unique 'law': *Wolff's law* which is not actually a law. '*The Law of Bone Remodelling*', formulated by Julius Wolff in 1892, describes how bone trabecular morphology matches stress trajectories calculated with the new theory 'Graphical statics' developed by Culmann. As Rik Huiskes rightfully points out (*J. Anat.* 197, 145-156), Wolff did not attempt to understand the process by which structural and geometrical properties



*Die Entwicklungsmarkung  
wird durch die funktionelle  
Schaffung der Phologie bewiesen.*  
Halle 9/10 P. 9. Juni 1920 Wilhelm Roux

evolve under given external conditions set by the environment. Instead, Wilhelm Roux considered bone adaptation to be the result of a 'quantitative self-regulating mechanism', based in the tissue, at the level of the cell. Roux should therefore be also credited for the formulation of this process of bone adaptation. It is striking to notice that again that this formulation was not made in isolation, and that it was around at the same time that Wallace and Darwin were making known their theory of evolution by natural selection through an adaptive process. Roux suggested how this process occurs for bone at the cellular level.

History of science tends to leave out the 'details' of the main story. However, it is important that the main story still collects the main actors so that, we, contemporaneous actors, can build our knowledge on a truthful basis of the past. By forgetting Roux we have asked the wrong question and it is fortuitous that Rik Huiskes, whom I consider the most important pillar in the ESB history, brings us back on track to study at the level where the process takes place. As Roux and others probably have been influenced in some way by the theory of Darwin and Wallace, we, biomechanicians, probably would be well advised to step forward in a truly multidisciplinary field and be also inspired by other fields in current development such as molecular biology and genetics.

# UPDATE ON ACTIVITIES FOR STUDENTS AND YOUNG MEMBERS OF THE EUROPEAN SOCIETY FOR BIOMECHANICS, Bill Taylor, student committee chair

## Student Committee

In this issue, I would firstly like to welcome and introduce the new Student Committee, who have willingly and enthusiastically dedicated their time and effort to helping organise student events for the ESB:



Liesbet Geris is a post-doc at K.U.Leuven, working on the topic of bone regeneration during fracture healing, implant osseointegration and tissue engineering applications, together with Hans Van Oosterwyck (ESB Treasurer). Lies will be taking on responsibility for organising and helping with student event management.

([liesbet.geris@mech.kuleuven.be](mailto:liesbet.geris@mech.kuleuven.be))

Arzu Tasci is currently completing her Ph.D studies on the subject of loading patterns in avascular tissue, at the Artorg Center, University of Bern, under the supervision of Philippe Büchler. Arzu is responsible for the Student Facebook Group (see below), so you are welcome to send questions on this topic directly to her. She will also be helping with student events directly, where possible.

([arzu.tasci@artorg.unibe.ch](mailto:arzu.tasci@artorg.unibe.ch))



Bijay Giri is completing his Ph.D. on the microscopic deformation of bovine cortical bone at Hokkaido University in Japan. Due to his location, Bijay will be responsible for organising and overseeing any events relevant to the ESB that occur outside of Europe, to ensure that the student section of the society is well represented externally.

([bijay@mech-me.eng.hokudai.ac.jp](mailto:bijay@mech-me.eng.hokudai.ac.jp))

Stefan Kratzenstein is a student of the BSRT, having recently begun his Ph.D. studies under my own supervision at the Julius Wolff Institut, Charité – Universitätsmedizin Berlin, Germany. His studies focus on quantifying the functional and kinematic capacity of patients with diseased joints to analyse and understand the propensity for joint regeneration. Stefan will be responsible for general student issues as well as aiding Liesbet in the management of student events.

([stefan.kratzenstein@charite.de](mailto:stefan.kratzenstein@charite.de))

I would personally like to thank these outstanding students and researchers for their ongoing commitment to supporting the ESB student cause. More information, as well as a little on me personally, can be found directly on the ESB website, under [www.esbiomech.org/Section/student-corner](http://www.esbiomech.org/Section/student-corner).

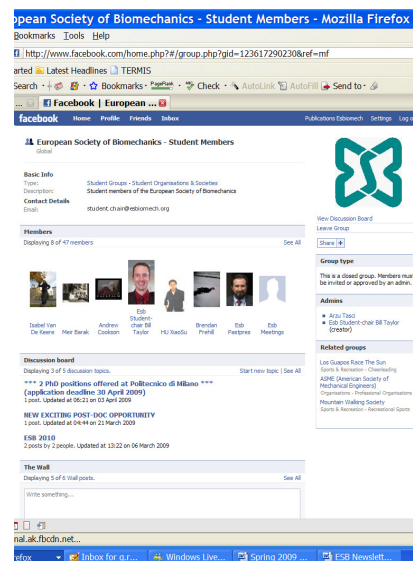


## Student meeting at ESB Workshop, Zurich, June 2009-04-06

With the upcoming ESB Summer Workshop on Movement Biomechanics and Sport to be held in Zurich on 7-9<sup>th</sup> June 2009, a lunch event is planned for Student Members of the ESB, which will include a presentation on the topic of “The most important aspects of undertaking and completing a Ph.D.” to be held by our esteemed ESB President, Prof. Ralph Müller, who will share a little of his vast experience on identifying and targeting the key features of doctoral studies. The event will provide an opportunity for social interaction with other student members of the ESB, as well as a chance to meet some of the current ESB committee, including myself. Planned for the lunch period on Tuesday 9<sup>th</sup> June, this event will include lunch and a 20 minute presentation from Prof Müller, as well as time to question and discuss issues that challenge students in the present scientific environment. If you are interested in taking part in this event, please be sure to register beforehand with the organising committee of the Workshop.

## ESB student Facebook on-line forum

With the emergence of new multiuser websites for social interaction, the ESB Student Committee has taken upon itself to create and run a Facebook Group for Student Members of the ESB to allow an active and progressive on-line forum. The goal is to have a living, updateable service, to which each member can contribute and add e.g. discussion, comments, advertising of jobs & Ph.D. positions etc.



The Facebook Group is entitled “European Society of Biomechanics - Student Members”, and is available for all student members of the ESB. If you wish to be personally involved and use this opportunity to build the ESB social and scientific community network, then please feel free to log into your favoured Facebook



([www.facebook.com](http://www.facebook.com)) account and simply type "Groups" into the search box and search for "European Society of Biomechanics - Student Members". You may wish to create a new username if you wish to keep your 'friends and family' facebook profile separate from your ESB profile. After clicking on "request to join group" your application will be rapidly processed by either myself or one of the student committee. Membership is of course free! The group is targeted specifically at student members, so I would like to encourage each of you to open new topics of discussion that are relevant to you, as well as post items of all types that are of interest to current students as well as upcoming post-docs.

Since our aim is to eventually replace the original ESB web forum, such a Facebook group allow more time for scientific interaction and less time and effort for web administration. I would like to encourage you all to become active participants in this endeavour, to

ensure that this can become a living, friendly and open method of exchanging relevant and up-to-date information. Most importantly, I wish you all fun and informative social interaction with all of your peers Europe-wide in the scientific community of Biomechanics ☺

Finally if there are any questions, issues or suggestions that you would like to discuss or propose to improve the experience of student members within the ESB, please feel free to contact me directly, Bill Taylor, ([student.chair@esbiomech.org](mailto:student.chair@esbiomech.org)) or the student committee ([student.committee@esbiomech.org](mailto:student.committee@esbiomech.org)). I wish you all an excellent spring / summer session in your studies, and look forward to seeing as many of you as possible in Zurich.

Remember to look up occasionally, catch some sun and appreciate the cool things and people around you. Life's good if you let it be ☺

## ESB Congress, 5th-8th July, 2010



The European Society of Biomechanics 17<sup>th</sup> Congress will be held in Edinburgh, Scotland, UK on 5th to 8th July. The web-site is live at:

<http://www.lifelong.ed.ac.uk/esb2010/index.htm>

### Key Dates:

**Call for papers:** Spring and Summer 2009  
**Deadline for abstracts:** Monday 30 November 2009  
**Registration opens:** January 2010  
**Notifications of acceptance:** February 2010  
**Provisional programme available:** February 2010  
**Early registration closes:** Friday 30 April 2010  
**Registration closes:** Friday 18 June 2010

The 2010 meeting will cover the ESB's traditional core topics while including emerging areas in which much new and exciting biomechanics research is taking place.

A pre-course will draw on the experience of experts in their field to provide state of the art knowledge in an area of general biomechanics interest.

Plenary sessions are planned to address current "hot topics" in biomechanics research, and to provide valuable insight into the ever-increasing importance of collaborative research, interdisciplinary programmes, EU funding opportunities and biomechanical education programmes.

The 2010 conference will be hosted by The University of Edinburgh, Scotland, UK. The University's central campus is located in the city's 'Old Town', at the heart of the capital. Edinburgh is one of the greenest and architecturally most beautiful cities in Northern Europe, with a colourful history based on the nation's political and cultural past. The University was founded in 1558

and features some of the grandest buildings in the city, as well as the most modern academic facilities and services. Lectures will be held amongst the University's George Square, see pictures to the right, with no more than 5 minutes walk in between conference venues.

### Local Organising Committee

European Society of Biomechanics Conference Secretariat  
Office of Lifelong Learning - CPD Unit  
The University of Edinburgh  
11 Buccleuch Place  
Edinburgh, EH8 9LW  
Scotland, UK  
Email: [esb2010@ed.ac.uk](mailto:esb2010@ed.ac.uk)  
Tel: +44 (0) 131 651 1819

A conference dinner will be held on the evening preceding the last day of the conference, Wednesday 7 July. This will be held at

**Dynamic Earth**, situated at the foot of Arthur's Seat, adjacent to Holyrood Palace and the Scottish Parliament

Edinburgh has excellent transport links with the UK and with Europe. For additional travel information, visit the Scottish Tourist Board web site:

[www.visitscotland.com](http://www.visitscotland.com)



For questions relating to the programme please contact Mark Taylor at: [mtaylor@soton.ac.uk](mailto:mtaylor@soton.ac.uk).

# ESB 2010 AWARD ANNOUNCEMENTS

J.M. García-Aznar, Vice President

The mission of the European Society of Biomechanics (ESB) is to **promote excellence** in biomechanics research, to foster integration of clinical and basic science, and to facilitate the translation of that science to health care and clinical practice. One way in which ESB supports its mission and promotes excellence is by recognition of outstanding members with **prestigious awards** given at the biennial ESB Congress. All ESB members are eligible for the awards below, except as restricted by specific award criteria.

The Awards Program of the European Society of Biomechanics includes the:

- S.M. Perren Research Award
- ESB Clinical Biomechanics Award
- ESB Student Awards
- ESB Poster Award
- ESB Travel Awards

## S.M. Perren Research Award

The S.M. PERREN RESEARCH AWARD was first presented at the 2002 ESB Congress in Wroclaw, Poland, and was previously named the ESB Research Award. This award, which is the most prestigious award of ESB, will be given to the first author of the best scientific paper submitted to the Chairman of the Award Committee. Papers should be based on original research and be previously unpublished. The scientific merit of the paper will be judged by the ESB Award Committee. Papers should be submitted in the format required for the Journal of Biomechanics. The award is open to all areas of biomechanics research and to both members and non-members. There will also be an award lecture named in Dr. Perren's honor at each biennial ESB Congress. The award includes a honorarium of 10,000 Swiss francs (approx. €6,000) sponsored by the AO Foundation in Davos, Switzerland, and a certificate which is presented after the S.M. Perren Award Lecture at the biennial ESB Congress.

Papers in consideration for the S.M. Perren Research Award should be sent electronically to the Chairmen of the ESB Awards Committee. The deadline for receipt of the paper for the 2010 ESB Congress in Edinburgh is December 1, 2009.

## ESB Clinical Biomechanics Award

The ESB CLINICAL BIOMECHANICS AWARD was established by ESB with the purpose of fostering the application of Biomechanics to clinically oriented problems. At every biennial ESB Conference the Award will be given to the most meritorious proceeding abstract. Eligibility includes ESB membership and an indication at the time of abstract submission that you would like to compete for the Award. The deadline for submitting proceeding abstracts to the 17th Conference of the European Society of Biomechanics (<http://www.lifelong.ed.ac.uk/esb2010/index.htm>) will be November 30, 2009.

The selection is made by an ad hoc Award Committee based both on the quality of the proceeding abstract and the presentation of the four selected award finalists at the Conference, which will be held in 2010 from July 5 to 8 in Edinburgh, Scotland. The first author receives a certificate and an amount of 1000 € donated by Elsevier Science Ltd., the publisher of Clinical Biomechanics. The award winner

will be asked to prepare a manuscript which is foreseen to be published in Clinical Biomechanics as the ESB Clinical Biomechanics Award Paper.

## ESB Student Awards

The ESB STUDENT AWARDS were instituted by Professor Marie-Christine Ho Ba Tho at the 1998 Congress in Toulouse, France, with the purpose to honor excellence in biomechanics already at a relatively young age. At every biennial ESB Congress one first prize Student Award and three runner up Awards will be given to four students based on the recommendation of the Awards Committee selecting the four best proceeding abstracts for a final presentation at the ESB Congress and on a secret ballot to select the first place, which will be held amongst the meeting delegates attending the award lectures. The award consists of a certificate for each winner and 1000 € for the first place and 250 € for the runners up donated by Elsevier Science Ltd. For consideration, the candidate must submit electronically an abstract to both the conference secretariat and to the Chairman of the Award Committee before or at the abstract submission deadline of the next biennial ESB Congress (November 30, 2009). In addition, a brief curriculum vitae and a statement signed electronically by the student's adviser that the applicant is a deserving candidate and will still be a doctoral student at the time of the biennial Congress should be included in the submission.

## ESB Poster Award

The ESB POSTER AWARD is given at each biennial ESB Congress with the purpose of raising the quality of poster presentations at the meeting. The selection is made by an ad hoc Poster Award Committee appointed by the ESB Council and chaired by the ESB Awards Committee Chairman. The award consists of a certificate for the winner and an amount of 300 € donated by Bertec Corporation. For detailed information on eligibility, submission and the selection procedure, please refer to the Awards Regulations or contact the Awards Committee Chairman.

## ESB Travel Awards

The purpose of the Travel Awards is to allow researchers to participate at the biennial ESB Congresses. Any ESB member who has shown a solid interest in biomechanics and who has an accepted paper at the biennial ESB Congress is eligible. The deadline for application for an ESB Travel Award will be February 1, 2010.

To view Past-Awardees please visit:

<http://www.esbiomech.org/Html/2>

More information on the ESB Award Program can be found here:

<http://www.esbiomech.org/Section/esb-awards>

For detailed information on submissions and nominations, please refer to the Awards Regulations:

<http://www.esbiomech.org/Html/16>

or contact the Awards Committee Chairman:

Prof. Dr. J.M. García-Aznar  
Chair, ESB Awards Committee  
Aragón Institute of Engineering Research (I3A)  
University of Zaragoza  
Campus Río Ebro, Zaragoza 50018, Spain  
[mailto:jmgaraz@unizar.es](mailto:mailto:jmgaraz@unizar.es)

---

## BIDDING IS OPEN TO HOST THE 2012 EUROPEAN SOCIETY OF BIOMECHANICS CONGRESS

There are only a few weeks left for you to bid to host the European Society of Biomechanics Congress 2012. The ESB invites proposals for its future ESB conferences for 2012 and beyond. Interested members can informally contact or send a proposal/bid to Dr. Peter Zioupos, Chair of the Meetings Committee at [p.zioupos@cranfield.ac.uk](mailto:p.zioupos@cranfield.ac.uk). Bid for 2012 will be considered at the next council meeting on 9<sup>th</sup> June 2009.

### MEETING ANNOUNCEMENTS

#### Final Announcement: European Society of Biomechanics 2009 Workshop Movement Biomechanics and Sport: 7-9 June 2009



The programme is now available for the ESB 2009 workshop at: <http://www.esb2009.ethz.ch/program.htm>  
The workshop focuses on the influence of movement and sport on soft tissues, especially on muscles, ligaments and tendons.

#### Confirmed keynote speakers are:

Prof. Per Aagaard	University of Southern Denmark, DK
Dr. Helen Birch	University College London, UK
Dr. Jachen Denoth	ETH Zurich, CH
Prof. Martin Flück	Metropolitan University, UK
PD Dr. Jörg Goldhahn	Clinic, Zurich, CH
Prof. Geoffrey Goldspink	University College London, UK
Prof. Hans Hoppeler	University of Bern, CH
Dr. Marco Linari	University of Florence, IT
Prof. Marco Narici	Manchester Metropolitan University, UK
Prof. Jess Snedeker	University of Zurich, CH
Dr. Viktor Tiegerman	biotissue technologies, Freiburg, GER

#### Registration fees (for those not already registered):

(includes 2 lunches, 1 buffet reception, conference dinner and coffee):

Student ESB Member:	420 CHF / 275 Euro
Student Non-ESB Member:	530 CHF / 350 Euro
ESB Member:	640 CHF / 425 Euro
Non-ESB Member:	740 CHF / 500 Euro

#### A CONFERENCE ANNOUNCEMENT, from ENGINSOFT, corporate member:

#### EnginSoft International Conference and ANSYS Italian Conference 2009

1-2 October, Bergamo - Italy

The EnginSoft International Conference 2009 will feature CAE Technologies for Industry. Leading experts from around the world will highlight CAE applications in automotive, aerospace, biomedicine, energy, marine, oil&gas, consumer goods, environment and other software that will be presented through application cases and in product update sessions include:

ANSYS - ANSYS CFX - ANSYS FLUENT - ANSYS ICEM CFD - modeFRONTIER - FLOWMASTER - MAGMASOFT - FORGE - FTI - THIRD WAVE SYSTEM - LS-DYNA - ESACOMP ...

The Call for Papers is now open, please visit the conference website: <http://meeting2009.enginsoft.it>. Follow the sound of innovation - Get inspired about CAE



## OTHER MEETINGS

### ENDORSED MEETINGS:

**EUROPEAN SOCIETY OF BIOMECHANICS MEMBERS RECEIVE A REGISTRATION DISCOUNT FOR ALL MEETINGS ENDORSED BY THE ESB**

#### Call for Abstracts:

**World conference for Regenerative Medicine, Leipzig, Germany, Oct 29-31<sup>st</sup> 2009.**

The ESB will be hosting a symposium at the **World conference for Regenerative Medicine**. When you submit your abstract state that you are a member of the ESB and would like your abstract to be considered for the symposium. Abstracts should concern biomechanical/mechanobiological aspects of tissue engineering and regenerative medicine.

**Abstract deadline: July 15<sup>th</sup> 2009**

<http://www.wcrm-leipzig.com/>

**ESBiomat 2009: 22nd European Conference on Biomaterials**

September 7-11, Lausanne

*Note from the organisers:* over 1000 abstracts have been submitted for presentation. We are limited to 1200 participants. Registration is only guaranteed upon receipt of payment. Places at the congress are limited on a first paid, first reserved basis. When 1200 have registered and paid, we will close the registration. We advise would be participants to take advantage of the early reduced rate registration fees.

**Early Registration: until June 30<sup>th</sup>, 2009**

<http://www.esb2009.org/>

**SimBio-M : Simulation for Bio-Mechanics, Material, Medical, Molecule**

1-3 July 2009, Juan Les Pins, France.

This conference will focus on the advances in **Simulation** technologies in the fields of **BioMechanics**, **BioMaterials**, **BioMedicine** and **BioMolecules**. The objective of the conference is to share and explore findings on numerical analysis techniques and mathematical modelling tools, allowing for computer-based investigations and resulting in predictive or exploratory work in various fields of biosciences.

[www.simbio-m.com](http://www.simbio-m.com)

### OTHER CONFERENCES OF INTEREST

**ICCB2009:** International Conference on Computational Bioengineering, including the first European Symposium on Biomedical Integrative Research.

16-18 September 2009 Bertinoro, Bologna, Italy.

<http://www.iccb2009.org/>

**WC 2009:** World Congress on Medical Physics and Biomedical Engineering

September 7 - 12, 2009, Munich, Germany

The paper submission system is now closed.

However, the submission of abstracts is still possible :

Abstract submission for oral presentations : - May 15

Abstract submission for poster presentations: - July 15

<http://www.wc2009.org>

**ECCOMAS** European Community on COmputational Methods in Applied Science. International conference on Tissue Engineering.

July 9-11, 2009, Leiria, Portugal.

[http://www.cdr-sp.ipleiria.pt/index.php/TE\\_home.html](http://www.cdr-sp.ipleiria.pt/index.php/TE_home.html)

**2<sup>nd</sup> TERMIS Word Congress.** Tissue Engineering and Regenerative Medicine International Society.

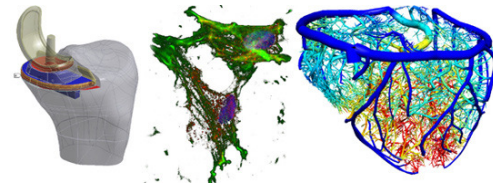
August 31-September 3, 2009, Seoul, Korea.

<http://www.termis.org/wc2009/>

**Bioengineering 09.** September 24-25<sup>th</sup> 2009

University of Oxford, Institute of Biomedical Engineering & Department of Engineering Science

<http://www.bioengineering09.net/>



**Third International Conference on Mechanics of Biomaterials & Tissues:**

December 13-17, 2009, Clearwater Beach, Florida.

<http://www.icmobt.elsevier.com/>

**6th World Congress on Biomechanics**

August 1-6 2010, Singapore

<http://www.wcb2010.net/>

**Annual TERMIS EU Meeting 2010:**

13<sup>th</sup>-17<sup>th</sup> June 2010, Galway, Ireland

<http://www.termis.org/eu2010/>

## SOCIETY NEWS

### UPDATE ON THE 2009 ESB MEMBERSHIP CAMPAIGN

Following the offer of membership made at our last ESB meeting at Lucerne for non-ESB members, we received a significant number of applications. This is very encouraging and demonstrates the attractiveness of our society. On the other hand, we also noticed that a non-negligible number of members still did not pay their 2009 fees. There is a natural turnover in all scientific societies, however, it is important for members to also financially participate in the life of our society as the ESB has limited financial resources and membership fees are an important part of it.

We believe that there are still many European biomechanicians missing from the ESB membership. So we would like to encourage you to contact and convince your personal biomechanician friends who should obviously be an ESB member. In particular in countries where the number of ESB members is low (see graph p8), there is a huge potential to attract new members.

It is only by this kind of personal action that sometimes scientists open their mind to a new field ☺.

From a practical point of view, it is very easy to become a new ESB member, you only need to go to <http://www.esbiomech.org/OnlineApplication>



We would like to thank all the members that already paid their membership fee for 2009. Similar to last year's campaign, invoices were only sent electronically and should have been received on November 25, 2008. If you have not received it, please contact Hans Van Oosterwyck, the treasurer at: [treasurer@esbiomech.org](mailto:treasurer@esbiomech.org).

Payment must be online (web portal, see <http://www.esbiomech.org/OnlinePayment>), by bank transfer or credit card. In order to keep all administrative overhead as low as possible, we would strongly like to encourage you to use online payment. A valid credit card is needed for the secure transaction. The online payment site can be accessed after login. If you forgot your username and/or password, please consult the FAQ at our website (<http://www.esbiomech.org/Html/15>). Instructions for online payment can be found on the same webpage.

As it is crucial for any viable Society to have an accurate members' database, we would like to ask you to check your personal data (as given on the invoice) and update them if necessary. You can **update your personal data** easily online under 'Your Account' <http://www.esbiomech.org/Account/modifyYourPersonalData>, (personal login required). In particular, please make sure your **email address** is correct, as communication within the Society is done almost entirely by electronic means. In addition, check that you have the correct choice clicked under 'newsletter delivery options'. The cost of regular mail delivery comes from your membership fee and you may prefer those funds to be spent in another way, the money saved from those requesting e-mail only newsletters will be used to subsidise activities for student members. Finally, we also encourage you to **update your profile data**. These data will enable us to obtain a better overview of the members' population and, based on this, its needs and interests, <http://www.esbiomech.org/Account/modifyYourProfileData>.

## A warm welcome to the following new ESB members

We are pleased to announce we have accepted 15 new members since the last newsletter. Massimiliano Salaorno, Stefan Kratzenstein, Volkan Kovan, Jens Vinge Nygaard, Manuel Ignacio, Balaguera Jimenez, Jess Snedeker, Jolanta Pauk, Blanc Emilien, Ann Harvey, Alireza Roshan Ghias, Arne Vogel, Alessandra Carriero, Ondrej Holub, Robert Pettersson, Miguel Gortchacow

## Journal subscriptions

ESB is affiliated with the Journal of Biomechanics and Clinical Biomechanics, both published by Elsevier. As part of this affiliation, each member has the option to purchase a personal subscription. The fee for this subscription is a special reduced rate arranged between the ESB and Elsevier. The subscription is for both print and online access.

In addition, ESB members are also eligible to receive optional journal subscriptions at special reduced rates, arranged with Elsevier (The Knee, The Foot, Gait and Posture, Journal of Electromyography and Kinesiology) and Taylor & Francis (Computer Methods in Biomechanics and Biomedical Engineering).

Please remember that all journal subscriptions through the ESB must be treated as personal copies and cannot be used in libraries. Journal of Biomechanics and Clinical Biomechanics are included in the HINARI program (<http://www.who.int/hinari/en/>).

<i>Journal subscription rate 2009 (VAT included)</i>	
Journal of Biomechanics (print & online)	93 €
Clinical Biomechanics (print and online)	87 €
The Knee (print only)	87 €
The Foot (print only)	130€
Gait and Posture (print and online)	100€
Journal of Electromyography and Kinesiology (print only)	110€
Computer Methods in Biomechanics and Biomedical Engineering (print and online)	63 €

## ESB forum/ new job postings

We have temporarily suspended the use of the ESB forum due to tampering by external hackers. If you wish to advertise an employment or PhD position to ESB members and would like it to be placed on our new student members facebook site (members only access), see page 3, please send it to Gwen Reilly, the publications chair at:

[publication.chair@esbiomech.org](mailto:publication.chair@esbiomech.org)

